



Two Hills Studio offers a variety of beautiful metal finishes for our fine lighting and decorative metalwork. Most of our designs can be ordered in any of our finishes; however, each finish has characteristics and/or limitations that can influence its application and we've highlighted them below. Don't hesitate to check with us before making your final selections.

Samples of our finishes are available upon request and from our showroom.

*Please note that finishes can vary slightly from the images and samples and an exact match cannot be guaranteed.*

## Darkened/Antiqued

Classic, luxurious, and extremely durable – Our darkened finishes are not applied, they're the beautiful result of controlled reactions on the metal. Darkening is the best choice for exterior/wet rated locations and will endure for decades. Darkened finishes will darken more over time, but they won't tarnish (save for corrosive environments).

Darkened finishes can be further enhanced with distressing and peening to create gorgeously textured and deep looks.

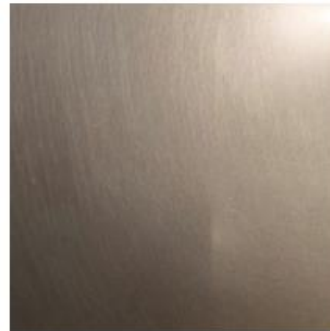
*Darkened/antiqued finishes are for copper and brass only.*



Burnished Copper



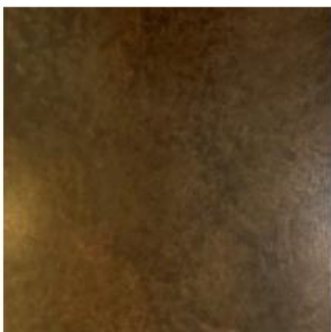
Darkened Copper



Blackened Copper



Mottled Light Copper



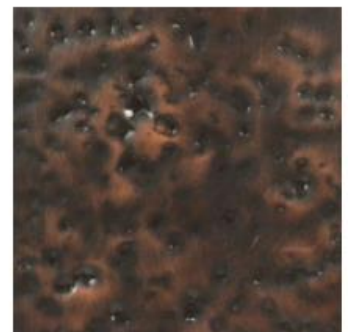
Mottled Dark Copper



Darkened Rust Copper



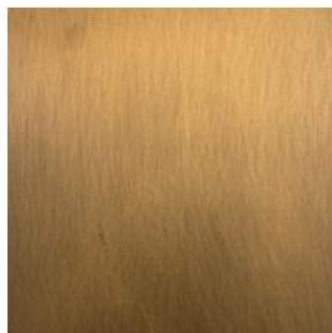
Verdigris Copper



Distressed Dark Copper (Add'l Charge)



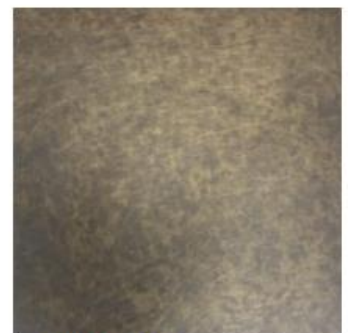
Burnished Brass



Darkened Brass



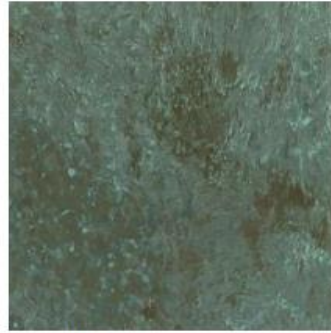
Blackened Brass



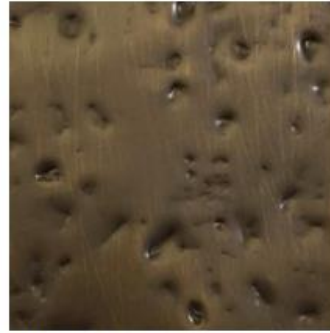
Mottled Light Brass



Mottled Dark Brass



Verdigris Brass



Distressed Dark Brass (Add'l Charge)

## Coatings

Durable, visually textured, and a little glossy – We ‘get’ that darkened copper or brass may not be the desired look every time... Our thick and enduring hammered coatings are well-suited for exterior – especially wet rated – locations.

*Coatings are recommended for galvanized steel, steel, and aluminum.*



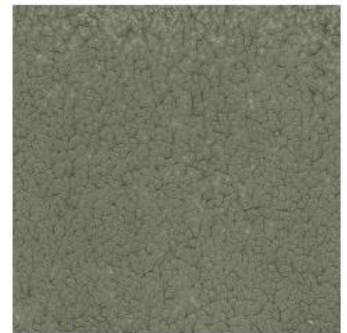
Hammered Bronze Coating



Hammered Brown Coating



Hammered Black Coating



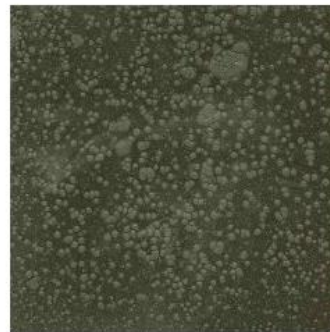
Hammered Gray Coating



Hammered Gold Coating



Hammered Silver Coating



Hammered Black-Gray Coating



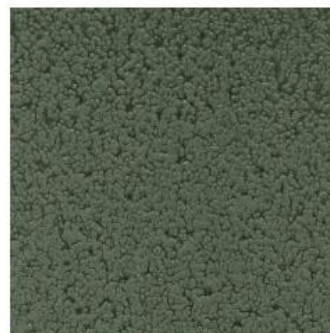
Hammered Black-Gold Coating



Hammered Gold-Brown Coating



Hammered Silver-Gold Coating



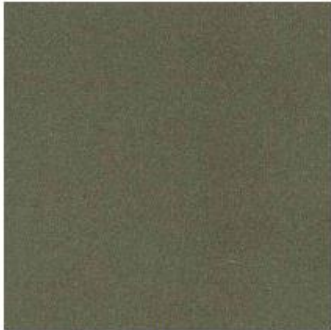
Hammered Black-Bronze Coating

## Paints

Rich, interesting, and beautiful – Our painted finishes bring classic darkened finish looks to other metals or capture and preserve that ‘raw’ metal look. While these are our standard painted finishes, we can match virtually any color!

Painted finishes can be further enhanced with distressing and peening to create gorgeously textured and deep looks.

*Painted finishes are recommended for galvanized steel, steel, and aluminum and for dry or damp locations only – they’re not recommended for exterior wet locations.*



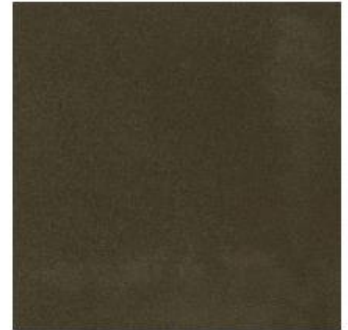
Medium Bronze Painted Finish



Dark Bronze Painted Finish



Copper-Bronze Painted Finish



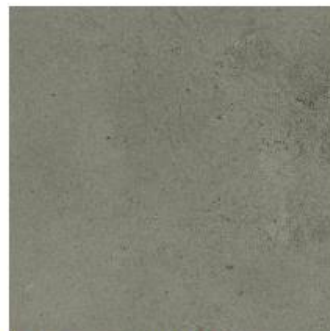
Black-Bronze Painted Finish



Brushed Aluminum Painted Finish



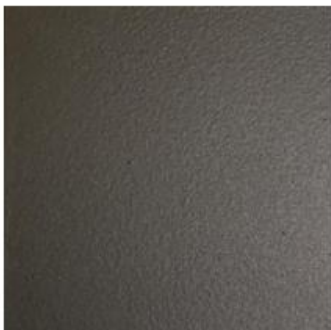
Light Pewter Painted Finish



Dark Pewter Painted Finish



Silver-Gray Painted Finish



Satin Black Painted Finish