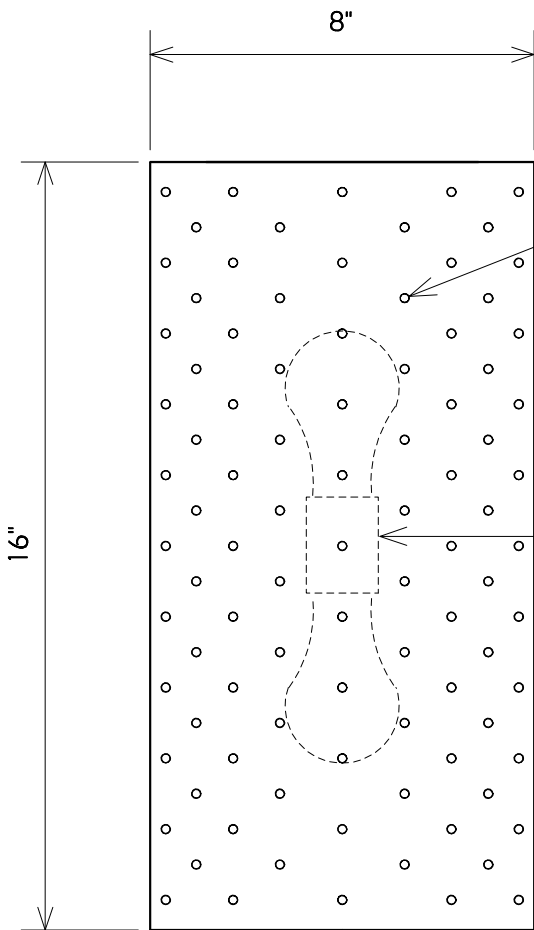


TOP



FRONT

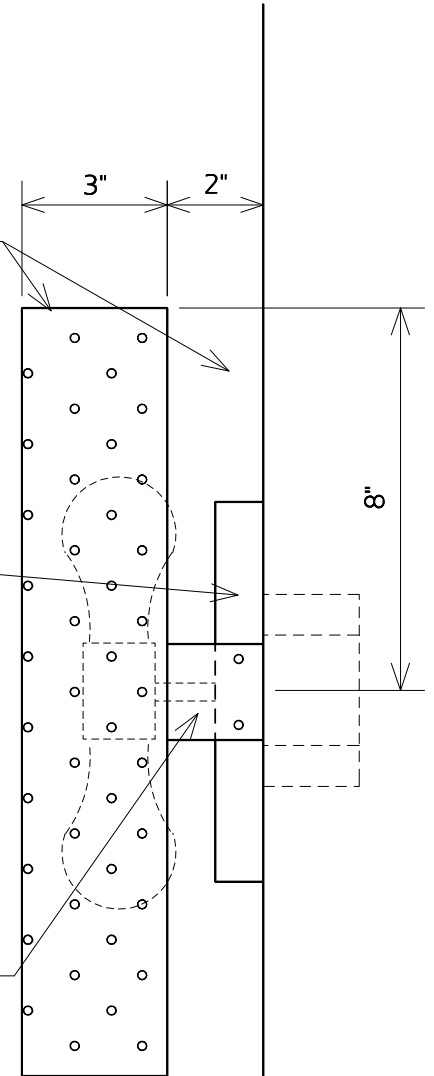
Open Top, Bottom & Sides

Punching

5" x 8" Canopy

Medium-Base Lampholder For 2  
Max. 75 Watt Lamps  
(Incandescent, CFL or LED)  
(120 Volt)

2" Wide Hold-Off Bracket



SIDE

**TWO HILLS STUDIO®**

Fine Lighting & Decorative Metal Work [www.twohillsstudio.com](http://www.twohillsstudio.com)

2706 SOUTH LAMAR BOULEVARD AUSTIN, TEXAS 78704 512-707-7571 FAX 512-707-7524

**WALL SCONCE CWS44L**

Fixture Is Appropriate For:

- Wet Locations As Shown
- Wet Locations With Glass Or Solid Top Added
- Damp Locations As Shown
- Dry Locations As Shown
- U.L. Approved