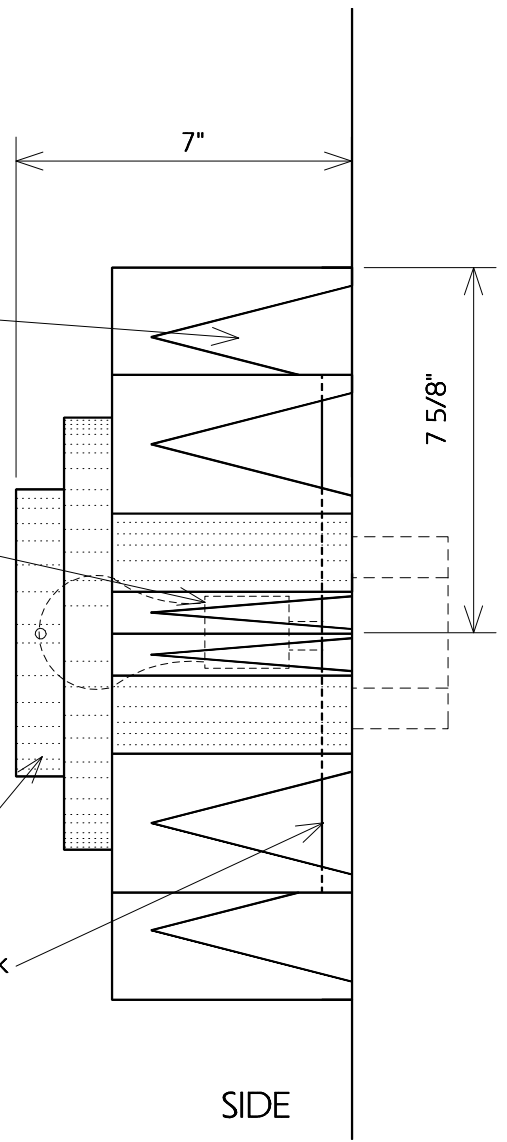


FRONT



SIDE

- Open Notches For Light Patterns On Wall
- Punching
- Medium-Base Lamp-holder For 1 Max. 100 Watt Lamp (Incandescent, CFL or LED) (120 Volt)
- Removable Pan Front With Set Screws
- 5/8" Deep Hollow Back

TWO HILLS STUDIO®
 Fine Lighting & Decorative Metal Work www.twohillsstudio.com
 2706 SOUTH LAMAR BOULEVARD AUSTIN, TEXAS 78704 512-707-7571 FAX 512-707-7524

WALL SCONCE CWS2

- Fixture Is Appropriate For:
- Wet Locations As Shown
 - Wet Locations With Glass Or Solid Top Added
 - Damp Locations As Shown
 - Dry Locations As Shown
 - U.L. Approved